

杉  
S u g i h a n  
半

kirei®

kirei®  
PLUS



Japan. Committed to SDGs

Bidet Seats  
without electricity for  
using around the world!  
SG-002

Kirei®

Non electrical Shower toilet seat  
powered by water pressure

水圧式洗浄便座

Kirei®



特許庁登録済み商品 / Patented Registered with the JAPAN Patent Office.

## SG-002

Japanese Patent Office Registered Technologies



### Twin Washing Nozzle



We have designed separate nozzles for buttocks and bidet cleaning, ensuring cleanliness whenever you use them. The water pressure-based system requires no electricity, making it cost-effective and usable in any country.

### Simple Lever Operation



When you push the lever forward, it activates the buttocks cleaning. Pulling the lever backward initiates the bidet cleaning. The usage is extremely simple, making it suitable even in countries with strict religious considerations for women.

### Water Supply Hose with Built-in Filter



Equipped with a filtered water supply hose and a branching handrail. Even if it gets clogged with hard water, regular filter cleaning allows the shower toilet seat to be used almost indefinitely.

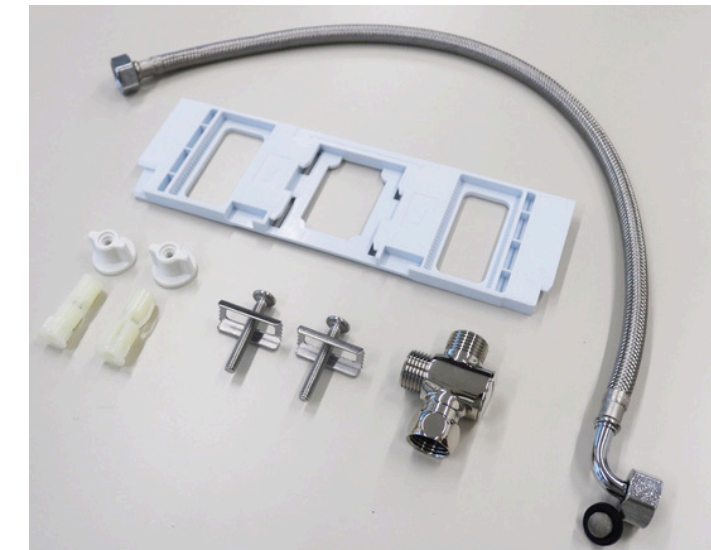
# The features of SG-002



Metal Water Supply Inlet

Sugihan Original

The connection to the metal water supply hose is made using a monkey wrench or spanner, providing a stronger tightening compared to hand tightening.

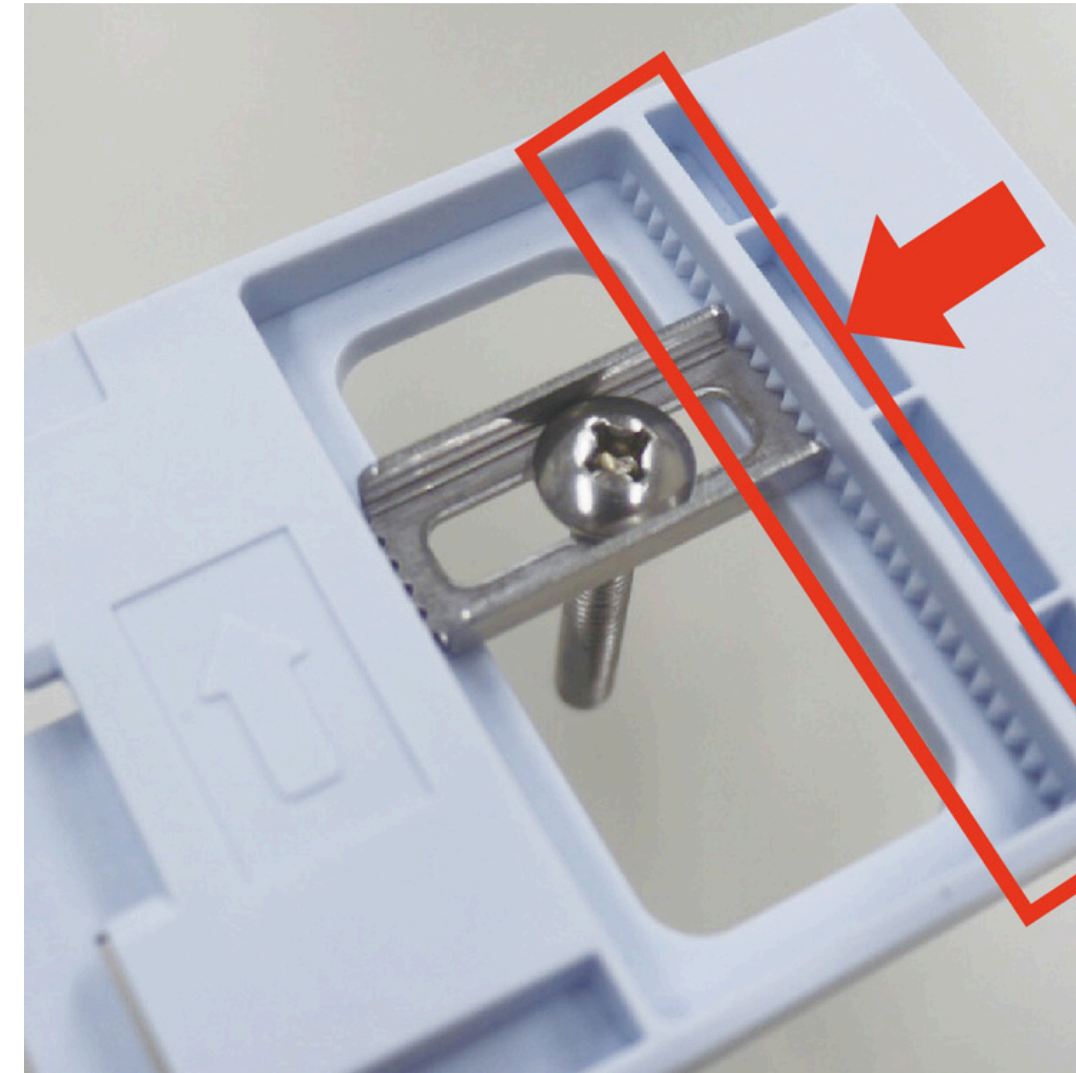


List of Included Parts

Sugihan Original

The connection to the metal water supply hose is made using a monkey wrench or spanner, providing a stronger tightening compared to hand tightening.

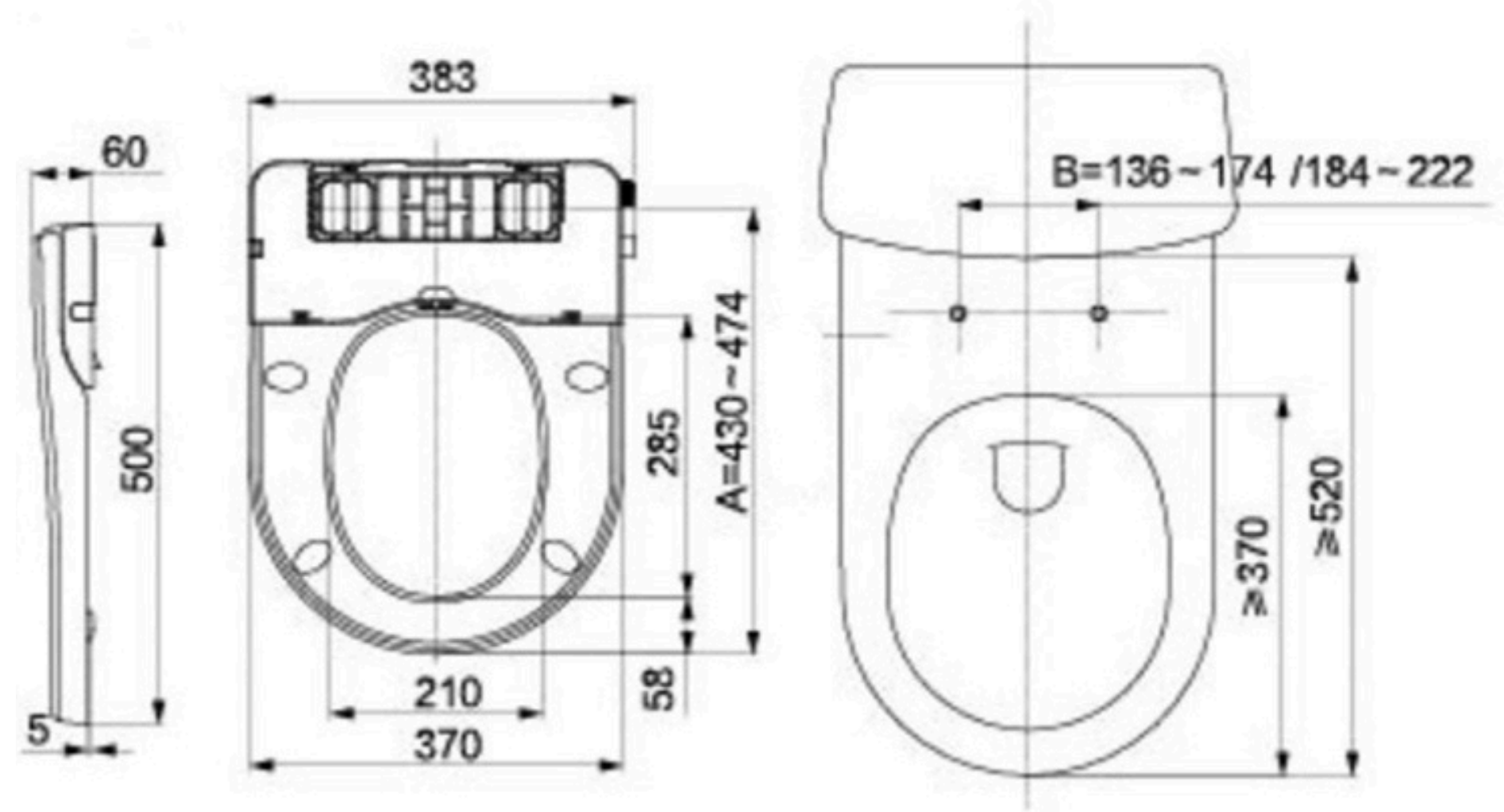
# Groove added to the Base Plate.



Sugihan Original

By incorporating grooves in the base plate and washer, the toilet seat and bowl are securely fastened, preventing any movement during use!

# Installation Dimensions and Conditions



## Compatibility for Installation

### Conditions

- ① Ability to independently open and close the water shutoff valve
- ② 14 cm spacing from the hole in the toilet bowl to the wall
- ③ Capability to attach the base plate"

# Domestic Sales Performance

kirei®

Introduced to

17 / 47

prefectures



In 2020 : approx. 2,000 units  
In 2021 : approx. 3,000 units

As of Nov. 2021

## ■ Appliance Stores

ヨドバシカメラ  
www.yodobashi.com



BIC CAMERA  
ビックカメラ



デンキチ

EDION  
エディオン



E-commerce



## ■ Hardware Stores

ユニティ  
ホームセンター  
なるほど家電

A-Z

ニシムタ  
NISHIMUTA

HITOMATE



60 stores in total



CAINZ

Soon to be introduced



**Hybrid Warm  
Shower Toilet Seat  
by Water pressure**

**Kirei<sup>®</sup>**  
**PLUS**

Do you know Kirei<sup>®</sup>?  
PLUS キレイプラス



HY-003S/For 100V  
HY-120V/For 120V  
HY-220V/For 220V  
HY-240V/For 240V



# Do you have disaster preparedness measures for toilets?

As usual

You can enjoy comfortable warm water cleaning and a warm toilet seat in your daily life.

PLUS

During emergencies or disasters

Even if there is a power outage, you can still use the "BOTTOM" and "FEMALE" washing functions as long as the water supply is still active, as these functions rely on water pressure for operation.

## What is a Hybrid type?

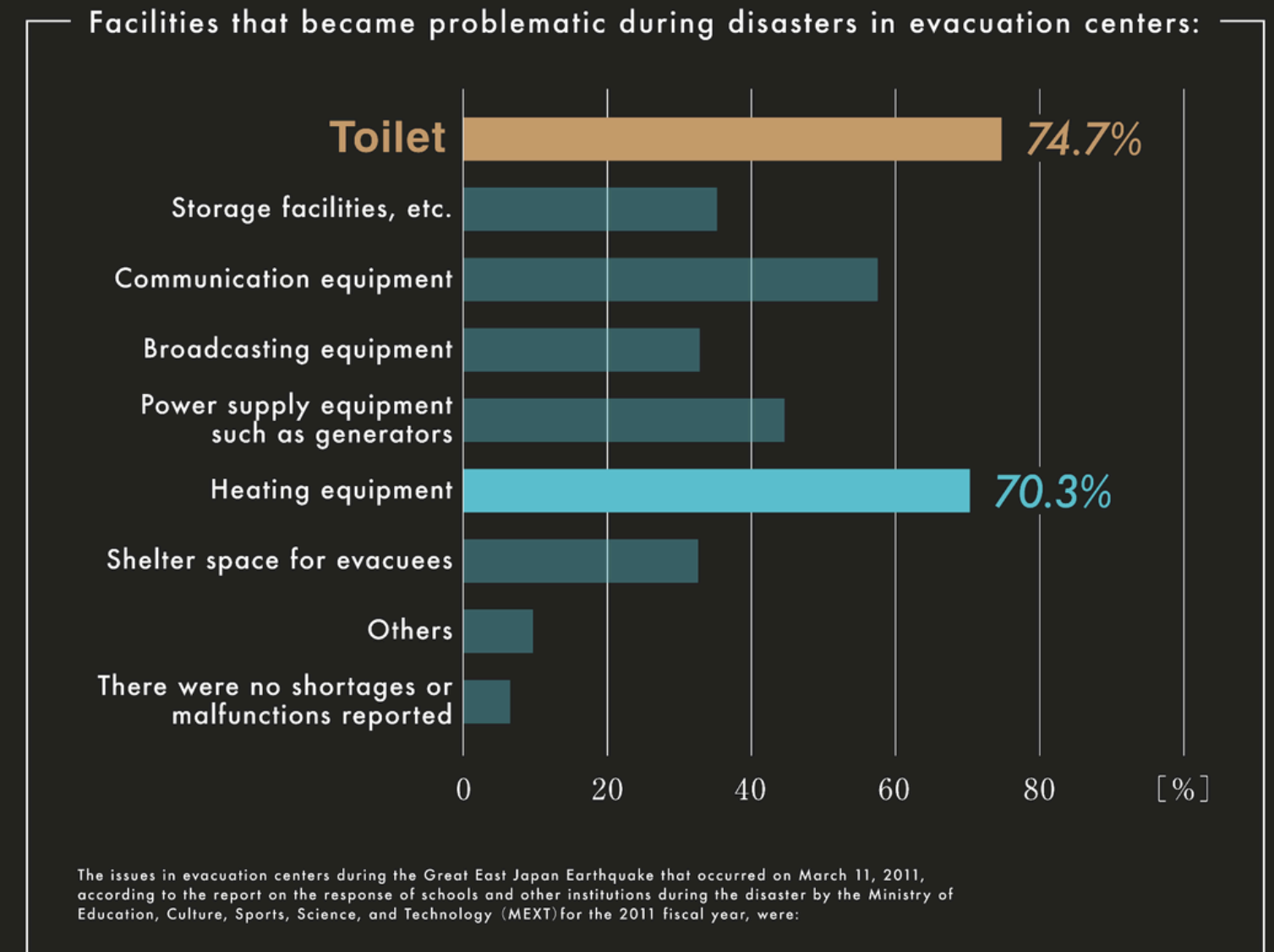
Registered product with the Japan Patent Office.

While conventional BIDET seats use motors for their washing functions, the Kirei series does not. Instead, it utilizes water pressure directly to create washing water. This method allows the seat to produce washing water by using water pressure only, making it possible to use the cleaning function even during power outages.



Introducing Kirei PLUS into daily life transforms everyday routines into disaster preparedness measures.

Therefore, the Kirei PLUS can dramatically improve the sanitary environment during disasters.



The major problem during disasters is the deterioration of hygiene and sanitation, which can ultimately lead to death. In the case of the Niigata-Chuetsu earthquake, nearly half of the 60 fatalities were attributed to related causes, such as stress, sleep deprivation, and infectious diseases resulting from group living conditions and the need to hold back on using toilets.

※This information was quoted from the Cabinet Office (Disaster Management) in April 2016.

By incorporating Kirei PLUS into daily life, not only during normal times but also during disasters, the hygiene and sanitation environment can be dramatically improved.

# The features of Kirei PLUS

PHILLIPINES		Conventional storage-type toilet seat	Conventional instant heating toilet sea	kirei PLUS
Electricity costs	Daily	about <b>3.4</b> PHP	about <b>1.36</b> PHP	about <b>1.36</b> PHP
	Monthly	about <b>102</b> PHP	about <b>40.8</b> PHP	about <b>40.8</b> PHP
	Year	about <b>1,241</b> PHP	about <b>496.4</b> PHP	about <b>208</b> PHP
Electricity cost reference: 1kwh=5.1 PHP by Meralco		※ Products from other companie	※ Products from other companie	if power is turned off during the warm months of April to October

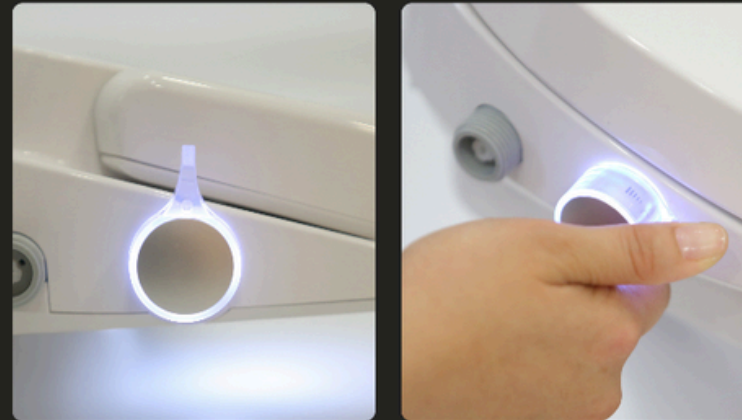
CAMBODIA		Conventional storage-type toilet seat	Conventional instant heating toilet sea	kirei PLUS
Electricity costs	Daily	about <b>0.2</b> USD	about <b>0.1</b> USD	about <b>0.1</b> USD
	Monthly	about <b>6</b> USD	about <b>3</b> USD	about <b>3</b> USD
	Year	about <b>73</b> USD	about <b>36.5</b> USD	about <b>15</b> USD
Electricity cost reference: All Japan Electric Home Appliances Marketing and Service Association - 1kwh=0.27		※ Products from other companie	※ Products from other companie	if power is turned off during the warm months of April to October

# Hybrid shower toilet seat by Water Pressure

HY-003S Series.

kirei<sup>®</sup>  
PLUS

## Washing functions



“FEMALE” washing when tilted forward  
“BOTTOM” washing when tilted backward  
Washing water pressure adjustable by lever tilt.

## Warming functions



Three-level warming function: Off, Energy-saving, Warm

Cleaning function: Off → Energy-saving (35°C) → Warm (38°C)

Heated toilet seat: Off → Energy-saving (33°C) → Warm (37°C)

Additionally, during warm seasons, turning off the warming function can significantly reduce electricity consumption.

This is a unique feature of Kirei PLUS, which allows the use of the cleaning function with water pressure.

# The usage is very simple

When the knob is pushed backward, it activates the posterior wash.  
When the knob is pushed forward, it initiates bidet cleansing.

\*Note: This is opposite for Kirei.

## Summary of Kirei PLUS:

- ① Daily comfort with warm water cleansing toilet seat; during power outages, water cleansing toilet seat is available.
- ② Turn off when not in use = Carbon-free + significant electricity cost savings.
- ③ Instantaneous type for energy efficiency.
- ④ Suitable for use with hard water (well water).

### ◆ Included parts



BASEPLATE

"The groove in the baseplate prevents vertical and horizontal displacement. Additionally, the mounting width can be flexibly adjusted, making it possible to attach it to various types of toilet seats. The mounting width can be adjusted from 120mm to 170mm."

STOPPER

"If the toilet bowl and seat cannot be fixed from the back with a nut, the Kirei PLUS can be secured by inserting it into the holes on the seat and fastening it from above with screws to create a stopper."

WATER SUPPLY HOSE

"The supply hose is equipped with a filter. Even if the washing function is impaired due to lime buildup in areas with well water, the washing function can be restored by cleaning the filter."

METAL T VALVE

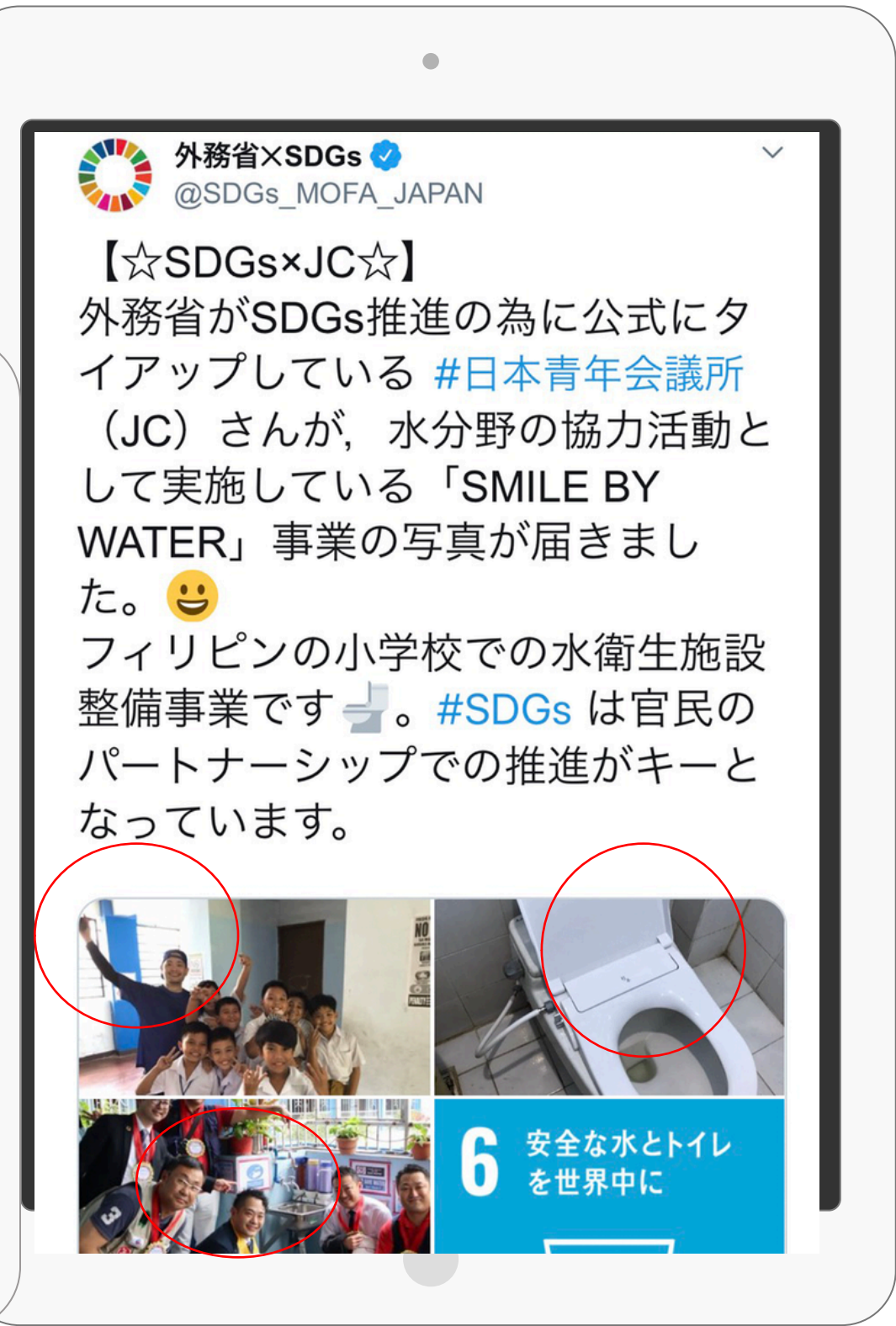
"The metal branch joint provides strong durability and prevents water leaks. It can be used worldwide thanks to the built-in filter."

### <Magazine Feature>:

In January 2019, In the free paper 'Kanisancub,' distributed in Kani City, Minokamo City, and Tajimi City in Gifu Prefecture, Sugihan Co., Ltd. was introduced as a noteworthy young entrepreneurial company in Kani City

### <Ministry of Foreign Affairs Twitter Feature>:

In December 2019, The progress of the support project for the Philippines' Pineda Elementary School, conducted in October 2019 upon the request of the Japan Junior Chamber International, along with the water pressure cleansing toilet seat 'Kirei SG-001,' was featured on the official Twitter account of the Ministry of Foreign Affairs



# Denpa Newspaper

On July 28, 2022, the water pressure cleansing toilet seat 'Kirei' and the hybrid water pressure warm water cleansing toilet seat 'Kirei PLUS' were featured in a press release in Denpa Newspaper.

## 電気不要のおしり洗浄

水圧式洗浄便座を販売する杉半(岐阜県可児市)が、一般家庭で導入を目指した水圧式温水洗浄便座「Kirei PLUS」を11月にも発売する。電気を



水圧式温水洗浄便座「Kirei PLUS」。正面左にあるレバーをひねると洗浄機能が使え

使った一般的な温水洗浄便座と異なり、水圧でお尻を洗浄するためモーターを搭載しておらず、停電などで電気がストップしても、水道が生きれば洗浄(HD)傘下のコスモ

### 杉半 岐阜県可児市が水圧式温水洗浄便座

### 量販店などで11月にも発売

機能をjス・ベリーズ(名古屋)のプーに家庭では温水・便座温品は家電量販店でも既Dグループでの取り扱いが一般的だ。その間3000台ほど売れ場者に提案を行った。より幅広い家庭に水圧「水圧で水を出せるため、災害時でも衛生的にトイレを使える」家電などの電気製品に「長」と意気込む。そう語るのは、杉半の取得が義務付けられているPSEマークの取炭素も訴求していく。同社は26、27日に東得申請を行っている

### コンシューマー・ホーム

瞬間式で電気を抑制できる上、モーターを使っていないため、お尻の洗浄時にも電力を消費しない。便座の温め機能は3段階に調整でき、オフにもできる。洗浄は便座右側に付いたレバーを前に倒すと「お尻」洗浄、後ろに倒すと「ヒデ」洗浄になる。

杉山社長は「水圧式17年」を販売開始した。

# Petroleum Gas Journal

On August 5, 2022, a press release featuring the water pressure cleansing toilet seat 'Kirei' and the hybrid water pressure warm water cleansing toilet seat 'Kirei PLUS' was published in the Petroleum Gas Journal.

【第3種郵便物認可】  
石油ガス・ジャーナル

NEWS LETTER

2022年8月5日 金曜日 第1771号

シェアが縮小する一方で、eコマースと異業種店利用者が増えている」等と述べた。

## ●展示のメインは、災害時対応ハイブリッド型洗浄便座「Kirei PLUS」

出展ブースでは、会員募集を呼び掛けると共に来場者の問合せに丁寧に対応した。独自に住設関連商品を扱う同社では、このほど加盟店となった㈱杉半と㈱中原電気商会が取り扱っている、電源無しでも洗浄できるハイブリッド型の「水圧式洗浄便座・Kirei PLUS」を展示し紹介した。2019年に開発した電源接続不要の「水圧式洗浄便座 Kirei」（平時も電源不要で洗浄機能利



用可能)は、価格は通常の洗浄便器と同程度で年間約5,000台を国内外で販売してきた。既設便器の部分交換用 Kirei 洗浄機能付き上蓋は約1万7,000円と廉価なことから、ワンルームマンションや簡易宿泊所、大手家電量販店などで、急速に販売数を伸ばしている。HB型新製品は平時はコンセントに接続し温水で洗浄、非常時は常温水だが洗浄器は機能する。今年11月発売予定。

問合せは、中原電気商会 TEL.011-261-6511。



あなたの事業に  
プラスアルファ

**α**

選択を

新規開業を通して新しい  
ビジネスフィールドを開拓します

**LPガス事業者様**

**コスモスベリーズ**

加盟店募集中!!

ホームページ <https://www.berrys.co.jp/>

TEL 052-977-1122

# Companies with the Mark



Sugihan Co., Ltd. is a company featured on the Ministry of Foreign Affairs SDGs platform website. Through the sale of Kirei, Sugihan Corp is contributing to the SDGs.



# Thank you


## CONTACT INFORMATION



**一般社団法人 才技能支援協力会**  
Talent and Skills Support Cooperation Association

**Yukinari Oguri**

 [info@saiginou.or.jp](mailto:info@saiginou.or.jp)

 <https://saiginou.or.jp>

**kirei**<sup>®</sup>

